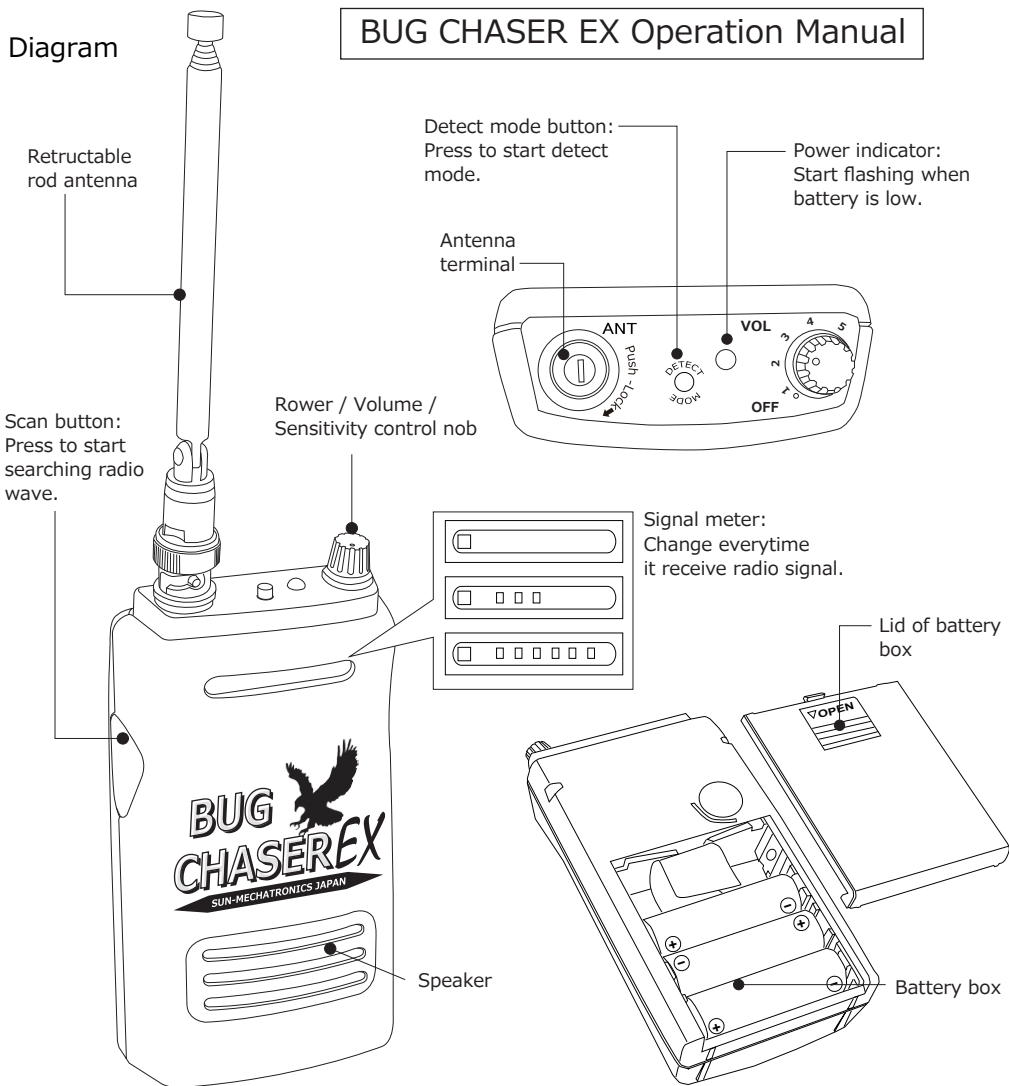
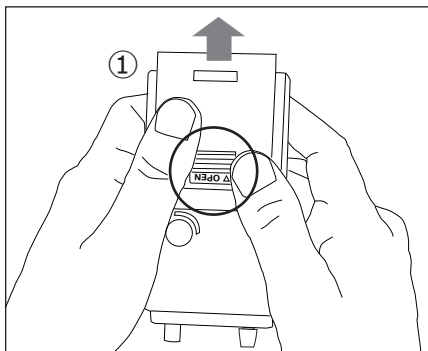


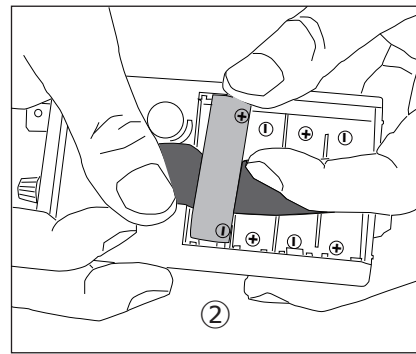
## Diagram



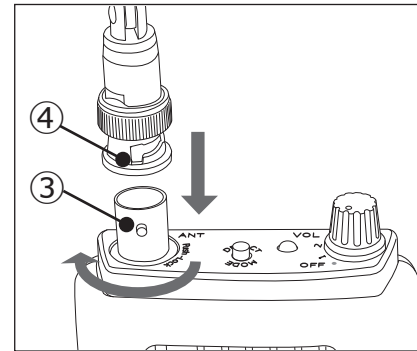
## ■ Preparations



1.Remove the lid of battery box first. Hold the body like the picture on the left. Press the part marked with a circle and slide it toward the direction of arrow (①).



2.You can see a plastic band inside of the battery box. Place 4pcs of AAA battery over this band. You can pull up this band when you remove batteries. After you placing battery, put back the lid of battery box.

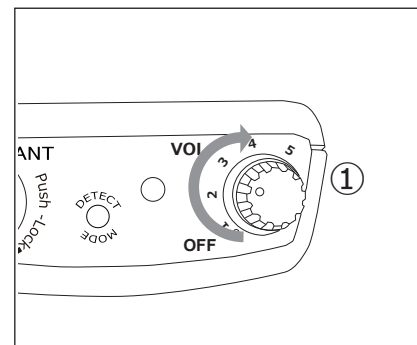


3.Attach antenna to the antenna terminal. Now, Bug Chaser EX (BC-EX) is ready.

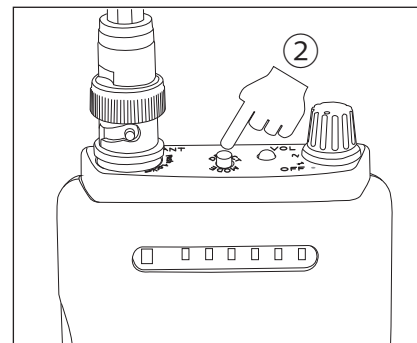
## How to use Detect mode

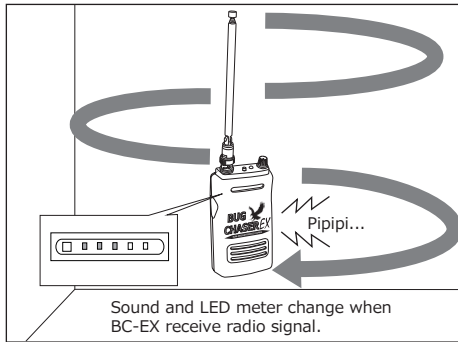
1.You can search the direction of the radio signal is coming from. Power nob works as sensitivity controller. By adjusting it, you can narrow down the range between BC-EX and a bug.

Turn on the power first (①).

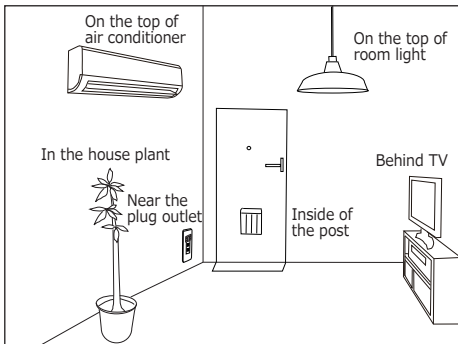


2.Press detect mode button (②).



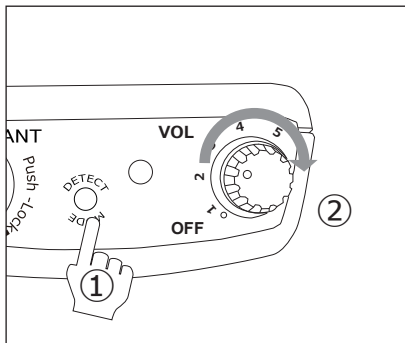


3. Hold BC-EX in your hand and move it like you wiping the wall or faniture. When BC-EX receives radio signal, it gives you an arart by changing the sound and LED meter. You cannot judge it is coming from bugging device right away even if BC-EX shows response. Check the area BC-EX shown the response with your eyes.



4. When you feel BC-EX responds very often, then shorten the antenna to the shortest position.

As a tendency, bugging devices usually set in the place like this (Picture on the left).



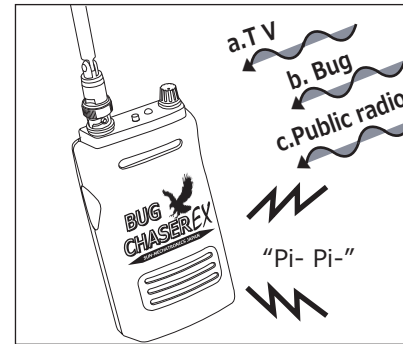
### How to use Scan mode

5. BC-EX has another function. It is Scan mode. When BC-EX receives radio signal, you can check if the radio signal is really coming from bug.

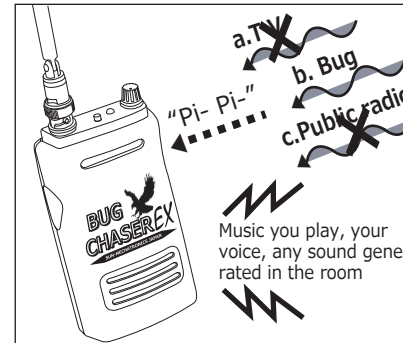
Press Detect Mode button to release BC-EX from Detect mode (①) and turn the volume nob maximly (②).



6. Press scan botton (③). BC-EX starts scanning giving off the "Pi..Pi..Pi..." sound. Right at this moment, BC-EX is scanning radio signal.

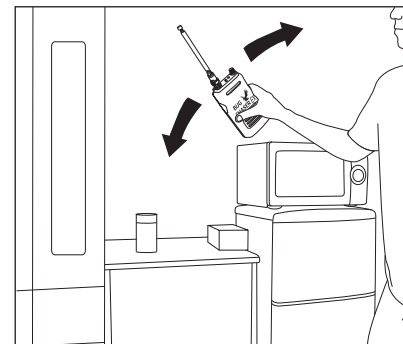


7. When BC-EX receive signal while scanning, it sends a discriminating tone (Pi- Pi- Pi-). At this stage, BC-EX telling you there' s suspicious radio signal in the room. Keep holding BC-EX and keep the speaker facing forward.

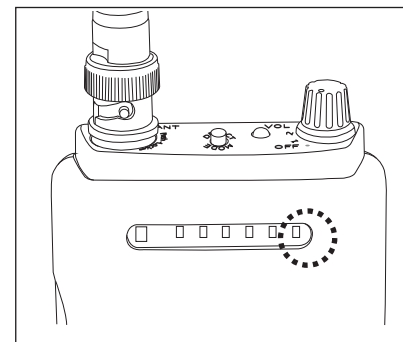


8. When bug picks up the discriminating tone sent by BC-EX, the bug also send it back again to the air. BC-EX receives the radio signal which contain- ing the discriminating tone, it judges the signal is from bug and automatically changes to audio mode and you can hear what you received.

Only bug in the room can pick up the discriminating tone and send it back to BC-EX.



9. You can use howling to search the bug. After BC-EX turns to audio mode, try sweeping wall or faniture like you did at the biggining. When you are getting nearer to the bug, BC-EX starts howling. Search the area BC-EX howled with your eyes.



10. While BC-EX is running audio mode it stops receiving signal if the radio signal is too weak. When it stops receiving, the LED in the further right starts flashing. In that case restart scanning by pressing scan button.

BUG CHASER EX SPECIFICATION	
Size	Main Body : 65 x 32 x 116mm / Antenna : φ14.5 x 155 ~ 615mm
Weight	Main Body : 201g (Including AA battery x 4pcs) / Antenna : 35g
Power Supply	AA battery x 4
Receiving Freq.	50 ~ 2,000MHz (※Sensitiviey goes down above 1,000MHz)
Scan speed	12 ~ 15 Sec (※Depends on the situation)
Audio Monitor	OK
Package	Bug Chaser EX x 1, Antenna x 1, AAA battery x 4