

Guide for using cloud function(Molnus)

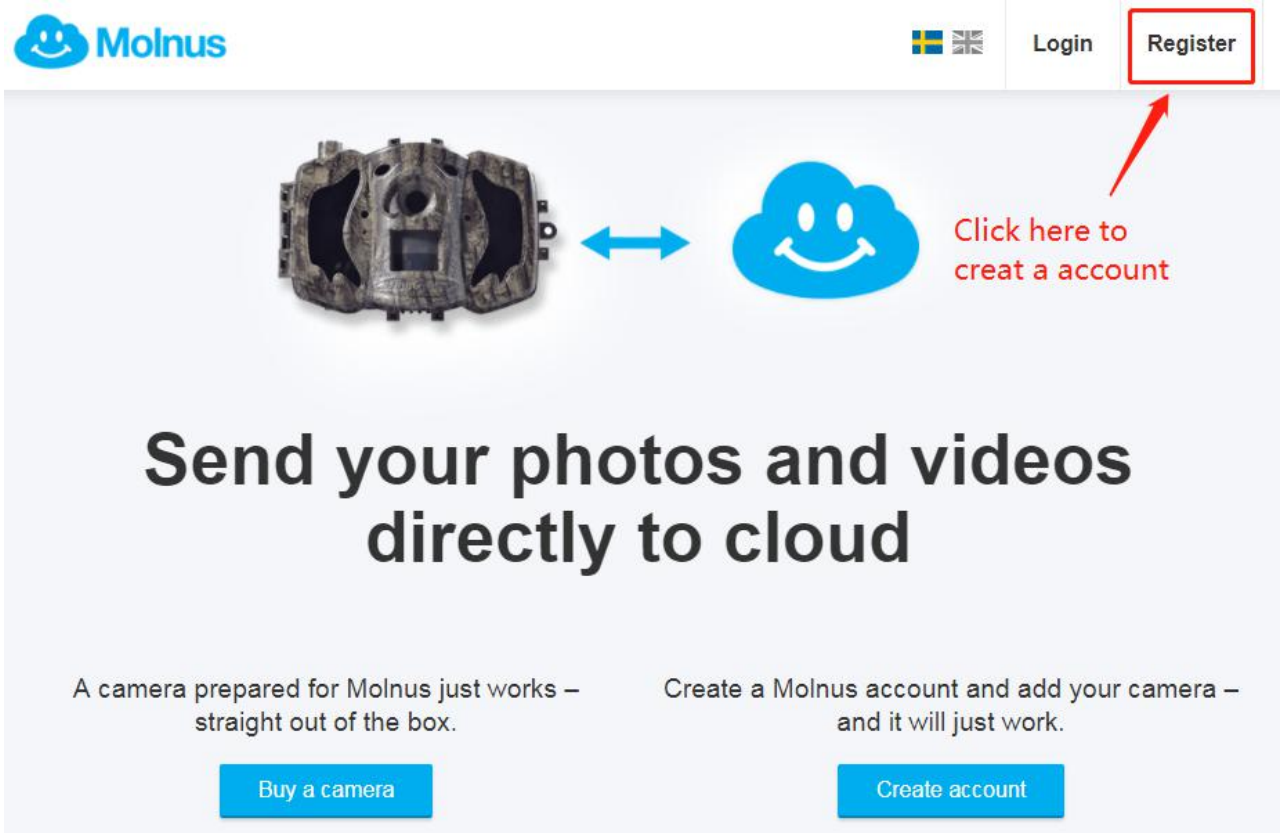
There are three steps to use cloud function.

- 1、 Register a new molnus account.
- 2、 Add your camera to the account.
- 3、 Set Molnus function on the camera.

Below is the detailed instruction.

1、 Register your Molnus account.

- 1.1 Visit the website : <https://www.molnus.com/> or download molnus app on phone.
- 1.2 Click Register to enter the page of creat a account.



The screenshot shows the Molnus website interface. At the top left is the Molnus logo. At the top right are flags for Sweden and the UK, followed by 'Login' and 'Register' buttons. The 'Register' button is highlighted with a red box and a red arrow pointing to it from below. Below the navigation bar is a large banner with a camera on the left and the Molnus cloud logo on the right, connected by a double-headed arrow. The text 'Send your photos and videos directly to cloud' is centered. Below this, there are two columns of text with corresponding buttons: 'A camera prepared for Molnus just works – straight out of the box.' with a 'Buy a camera' button, and 'Create a Molnus account and add your camera – and it will just work.' with a 'Create account' button.

- 1.3 Input the information refer to the notes. Then click the “Register” button at the bottom. Remember the Email and password, which you need for login.

Register user

Email
This will be your username, use this for login

First name **Last name**

Phone
Your personal phone number, must be with + and country prefix

Street address

Postal code **City**

Country

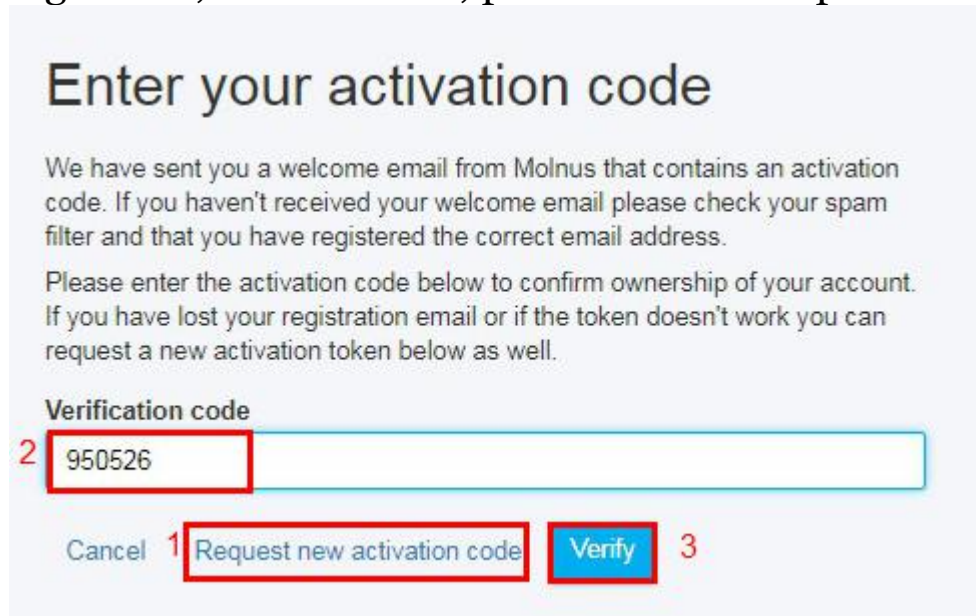
Password
Use at least 8 characters

Repeat the password

☒ I have read and agreed to Hylte Jakt & Lantman's treatment of my personal data according to Hylte Jakt & Lantmans [privacy policy](#).

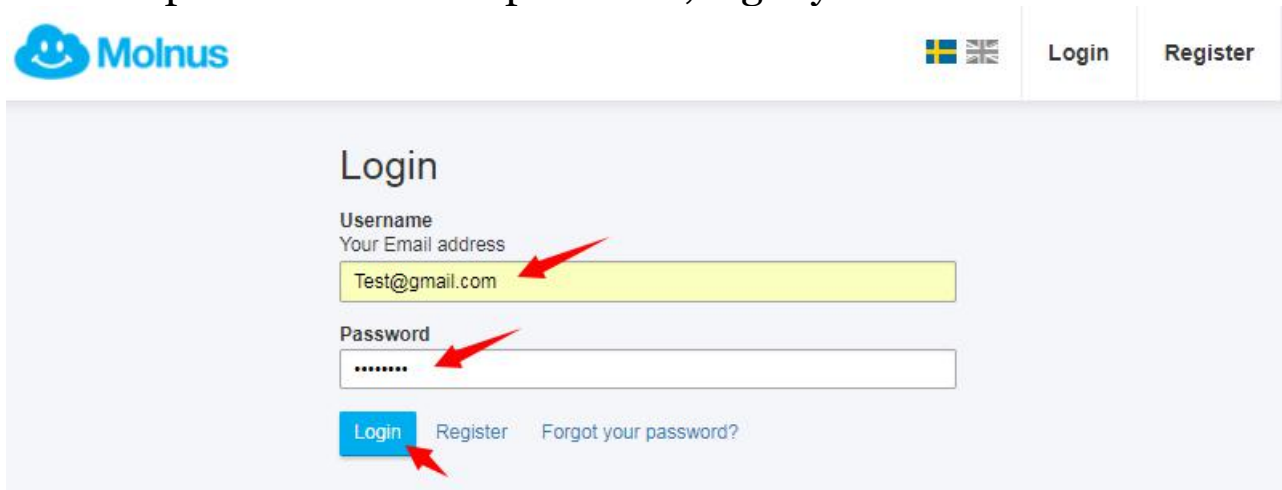
☒ I have read and agreed to Hylte Jakt & Lantman's [terms and conditions](#).

- 1.4 、 Enter the verification code to activate the account. The verification code will send to the email which you registered, if not receive, please check the spam mailbox.

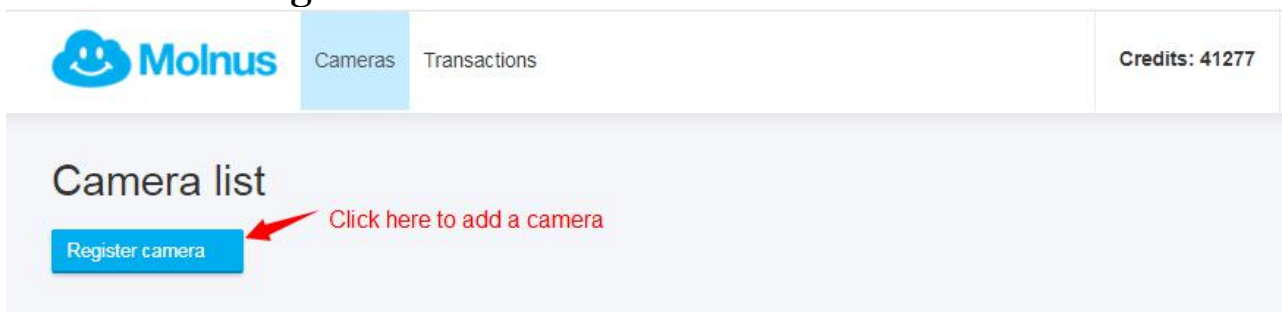


2、 Add your camera to the account.

- 2.1 Input the email and password, login your molnus account.



- 2.2 Click “Register camera” to add a new camera.




2.3 Input the information refer to the notes. Please find the IMEI and control code on the camera(See 2.4). About the APN information, please ask the provider of SIM card. Some SIM card operators uses user name and password on APN, but some not. So if your SIM card provider do not use this, then please leave this fields empty.

Register camera


Camera name
Name your camera

Boly_Test1

IMEI
You will find this number in your camera's menu under the  tab and then 'Version'.

861107036938611

Region
Asia

Control code
You will find this number in your camera's menu under the  tab and then 'Version'.

138611

Phone number
SIM card in camera, must be with + and country prefix.

+8618681464862

APN provider for SIM card
Supplied with the SIM card

3gnet

APN Account
If required by your SIM card provider

APN password
If required by your SIM card provider

Register Cancel

Information

IMEI: 861107036938611

Control Code: 138611

Soft Version: V1.03.04

Soft Date: 2018/12/18

Machine: MG984G-30M

MCU Version: V54

Menu Save **OK** Exit

2.4 Please insert SIM card, SD card, external power or batteries. Move the switch to test, wait the camera register the operator, then press menu key to enter menu setting page.

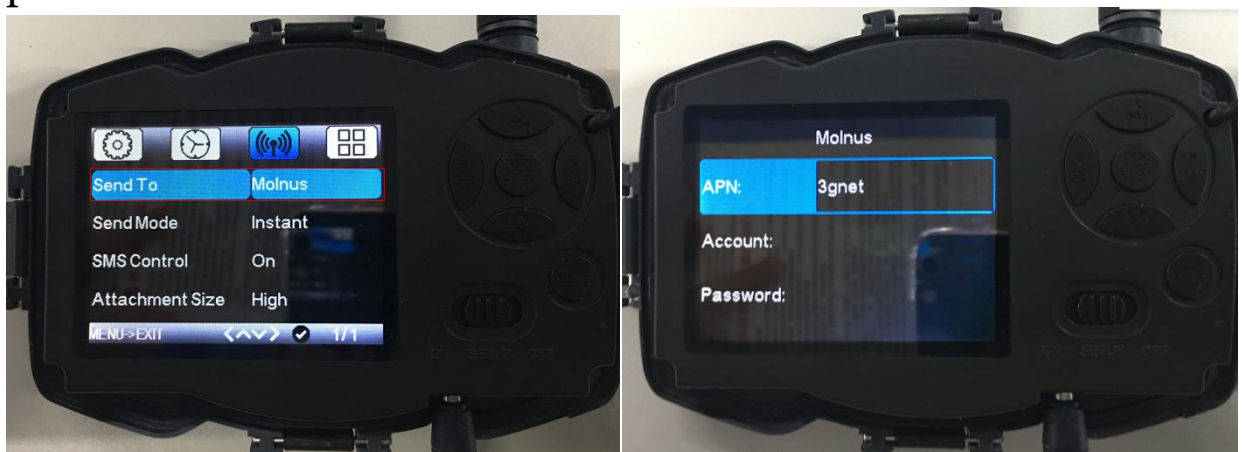


Find the item of “Version” , Press OK enter the version, you will find the IMEI and control code.

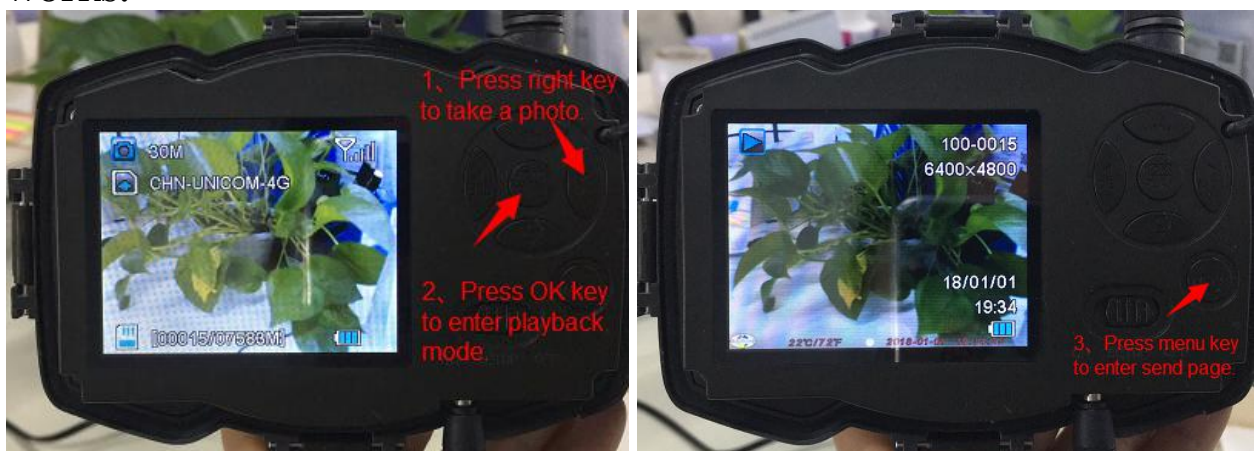


3、 Set Molnus function on the camera.

3.1、 Set “send to” to Molnus. Press OK to enter, and set the GPRS APN of the operator. If necessary please input account and password.



3.2 Send a picture in playback mode to make sure it really works.





3.3 After it display “Upload okay”, please login your molnus account on web page or phone app to check if you receive it. If display any other hint, please ask for help by sending the information to fae@bolymedia.com.

Below is the charge of molnus:

300 credits for new users	Free
Upload and download picture & video	Free
Setting change on Molnus	Free
Setting change on Molnus & sync to camera(SMS)	2 credits only

