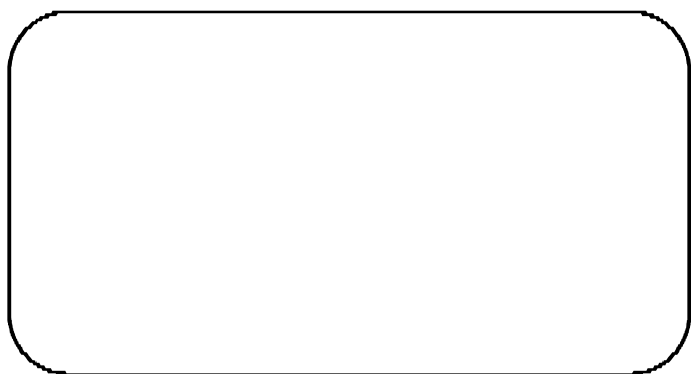


# 4G HD IP Camera

## Quick Start Guide

V 2.3



Camera QR code

**Please read this manual carefully before using this product and keep it for future reference.**

**This manual applies to our 4G series IP cameras.**

**Recommend operating the IP camera according to the content below.**

## **Content**

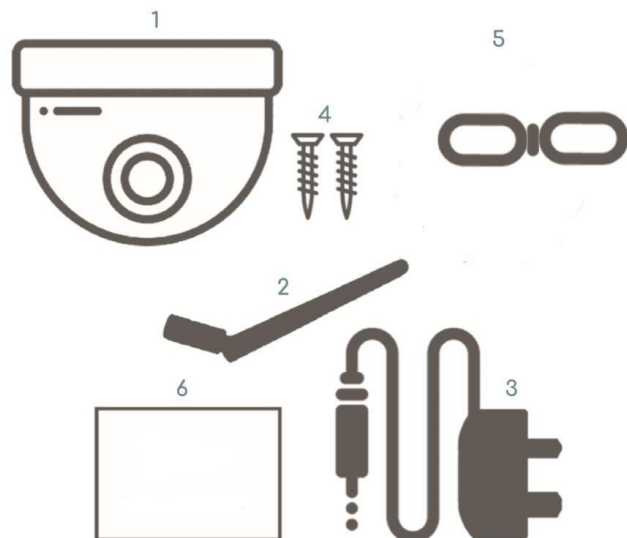
<b>1. About 4G camera</b>	<b>3</b>
<b>2. Install the Micro SD card and SIM card</b>	<b>4</b>
<b>3. Connect camera</b>	<b>4</b>
<b>4. View via mobile phone</b>	<b>5</b>
<b>5. View via PC</b>	<b>7</b>
<b>6. Check the SIM card</b>	<b>8</b>
<b>7. Set Micro SD card records</b>	<b>10</b>
<b>8. More info</b>	<b>12</b>

# 1. About 4G camera

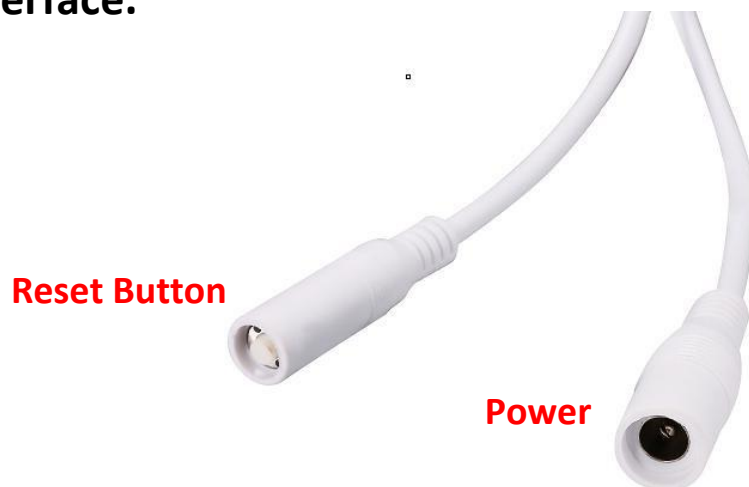
## 1.1 Product introduction.

This is a 4G HD IP camera for monitoring. it connects to the Internet via SIM card to send and receive data, and you can use it to remotely view real-time images from your mobile phone, computer or other device anytime and anywhere, it can save surveillance videos in the Micro SD card or computer, The camera also supports alarm functions such as sending alarm emails, alarming phone message push and other functions.

## 1.2 Product should contain:



## 1.2 Product interface.



**4G camera is without RJ45 interface, and it's not available for 4G.**

## 2. Install the Micro SD card and SIM card

### 2.1 Find SD card and SIM card installation tutorials in the CD information.



1-Mobile applications



2-PC client management software



3-HIPlayer



4-Frequently asked questions



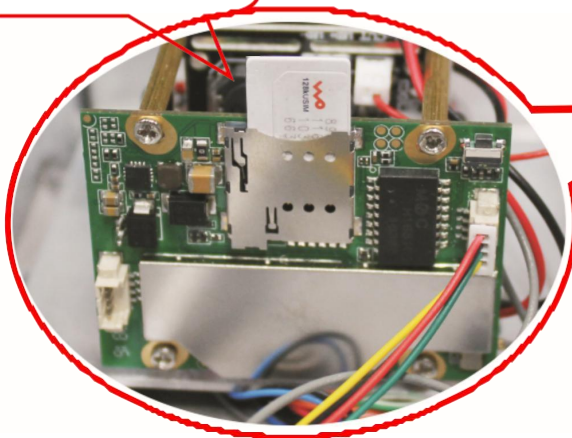
How to install the Micro SD card and SIM card



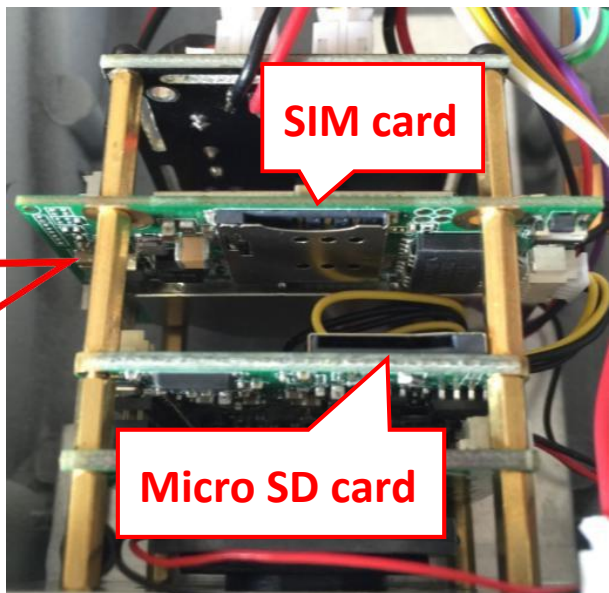
Quick Start Guide Of 4G HD Network Camera

### 2.2 Insert the SD card and SIM card according to installation tutorials.

Note the direction of the SIM card!



SIM card



Micro SD card

**Make sure the camera supports the frequency of the SIM card!**

**SIM card size type is Nano SIM(12.3mmx8.8mm)!**

**Please note the direction of SIM card installation!**

**Hot swapping is not supported!**

## 3. Connect your camera

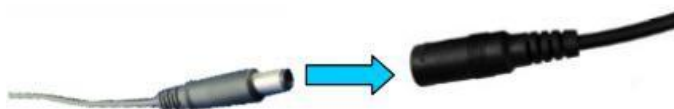
### 3.1 Install the antenna to camera.



Make sure the 4G signal is sufficient, You can read **"6. Check SIM card"** to know how to check the 4G signal strength.



### 3.2 Plug in power adapter and connect to camera.



Please use the standard power supply.

## 4. View via mobile phone

4.1 Download "CamHi" or "CamHipro" from Google Play Store / Apple App Store or scan the QR code below to get APP information.



Android

Android

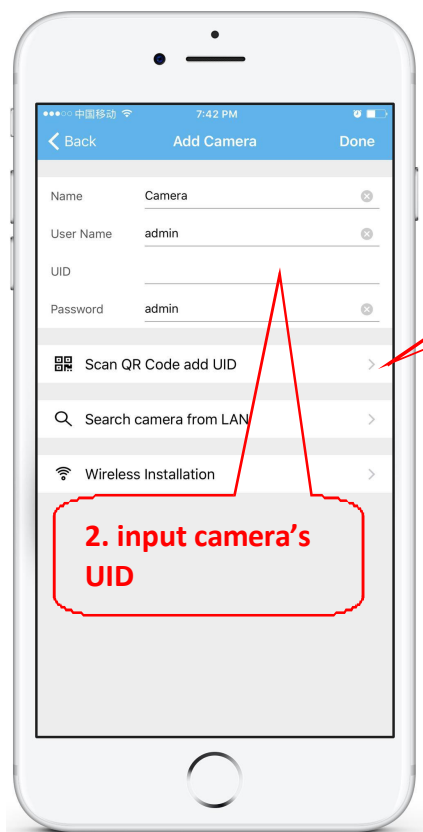
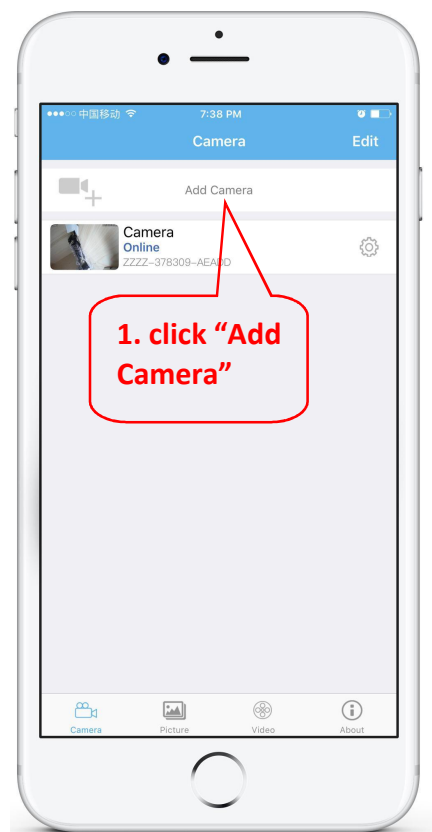


IOS

IOS

## Quick Start Guide

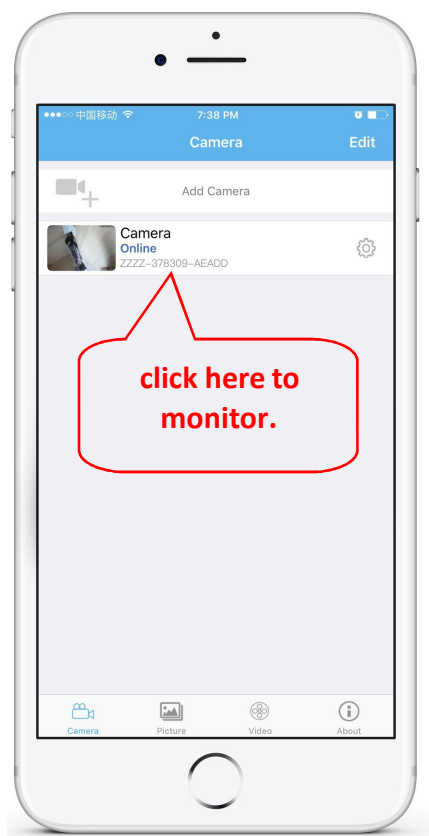
### 4.2 Run APP and Add Camera.



You can quickly enter the UID by scanning the QR code on the camera's label, as shown below



### 4.3 After adding the camera, click online camera to view real-time image.

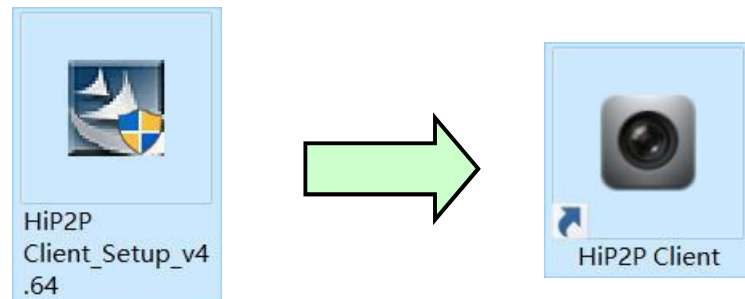


Detailed instructions for CamHI are available in the CD information.

If the camera shows "Offline", please read "6. Check the SIM card".

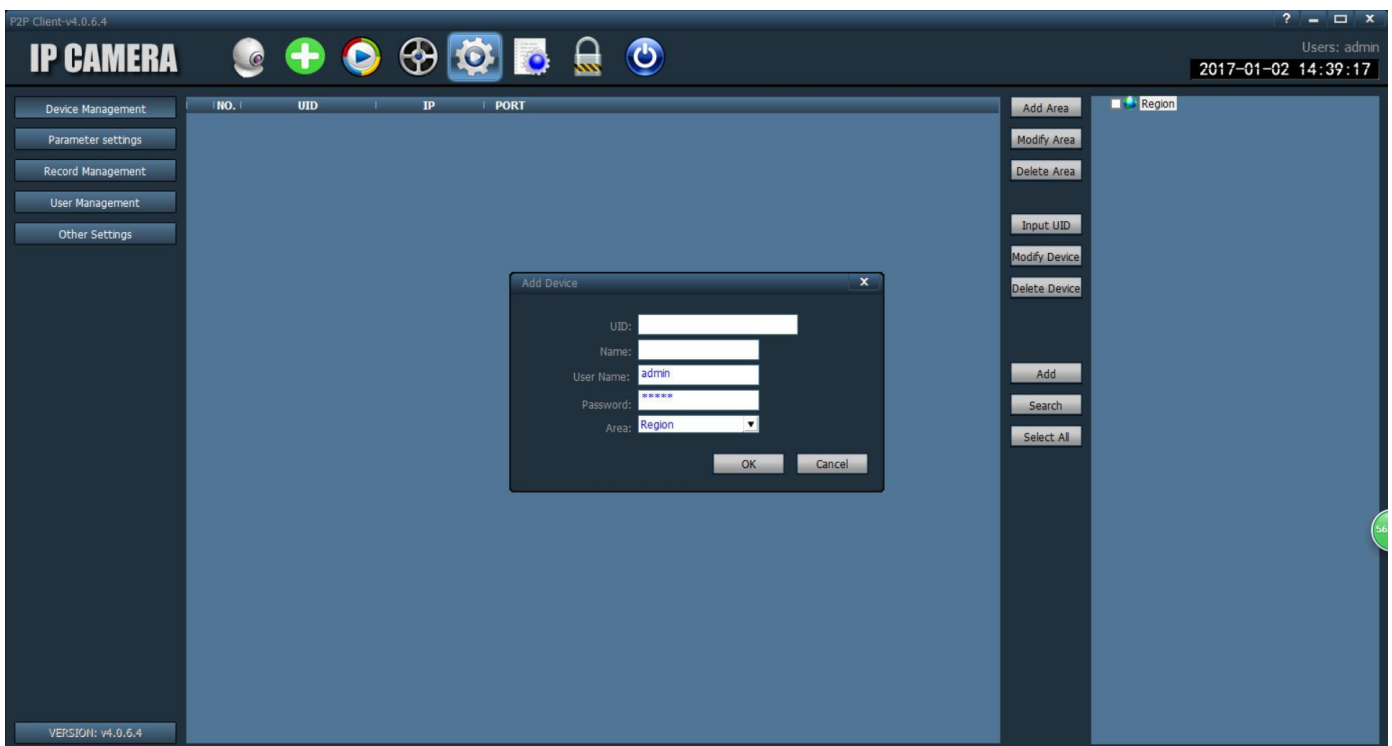
## 5. View via PC

**5.1** Install the “HiP2P Client\_Setup” from the CD information, then run “HiP2P Client”.



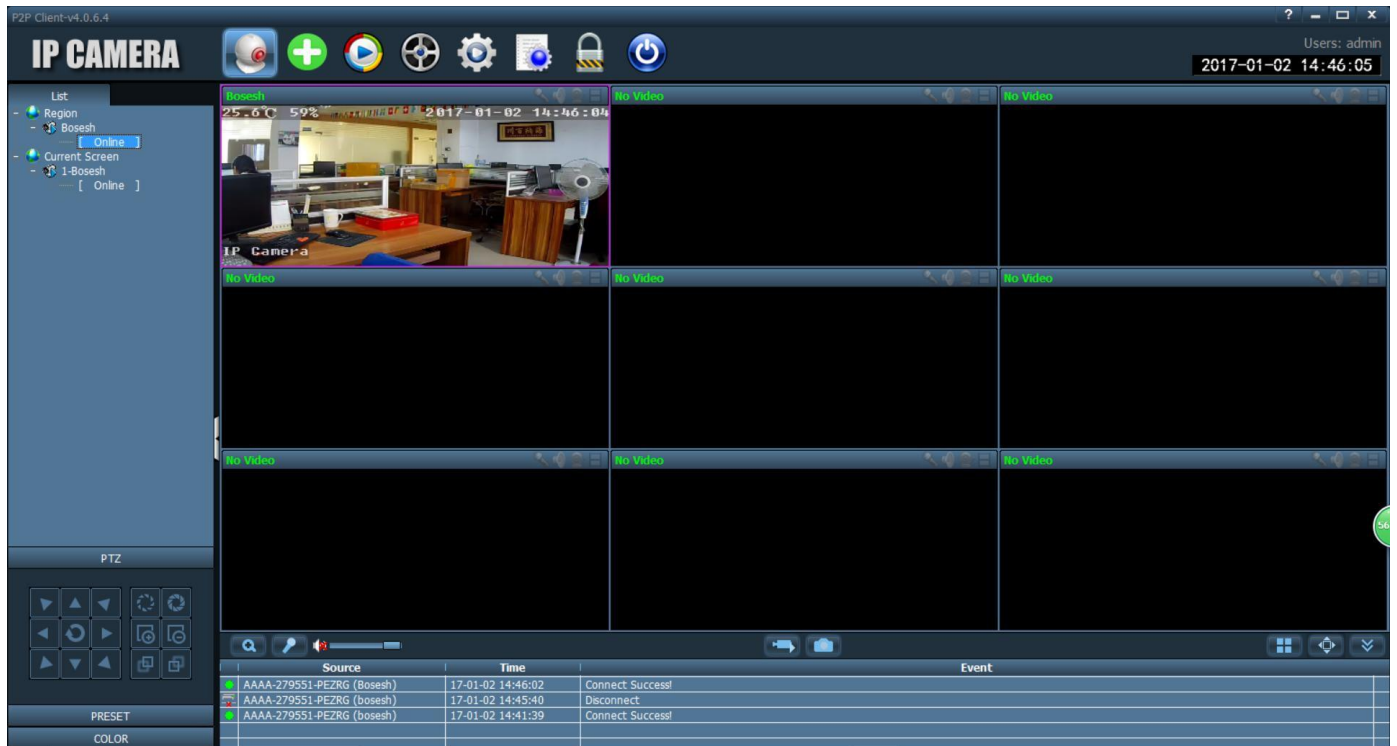
**You can find another installation file for MAC PC.**

**5.2** Enter the “Config” interface and click “Input UID” to input the camera UID, and then add the camera.



**5.3** Double click camera to view real-time image.

## Quick Start Guide



CMS installation packages and instructions are available in the  
CD information.

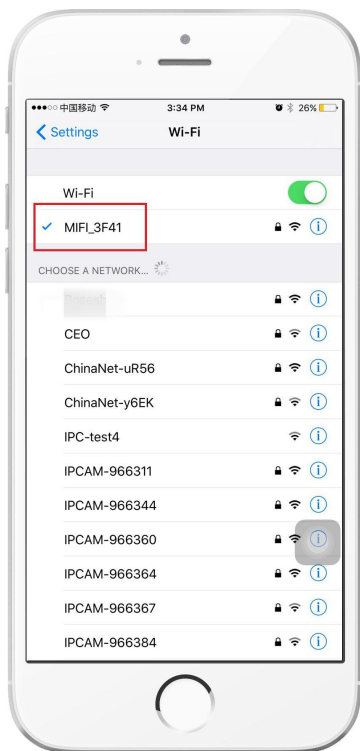
If the camera shows “Offline” or “Not connected”, please read  
“6. Check the SIM card”.

## 6. Check the SIM card

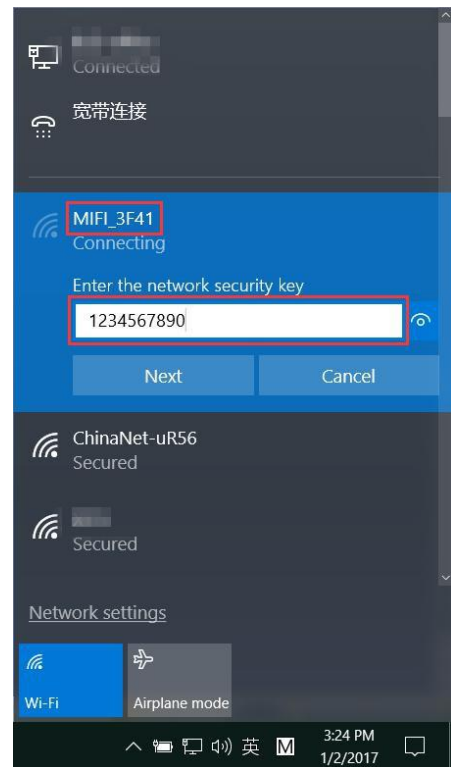
6.1 You can find a hot spot beginning with "MIFI\_" when the camera starts working, use the mobile phone or PC to connect the hot spot "MIFI\_\*\*\*\*", the hot spot password is "1234567890", as shown blow.



## Quick Start Guide

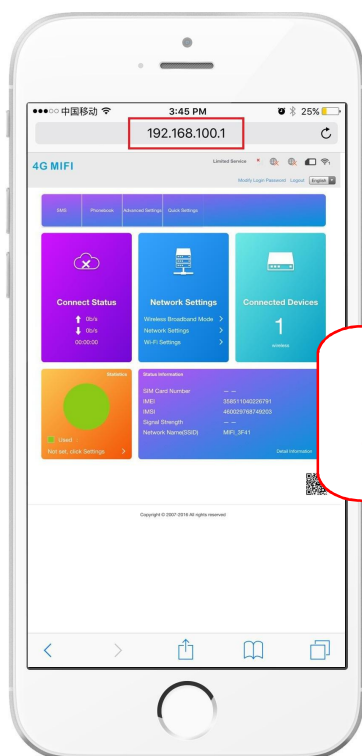


mobile phone

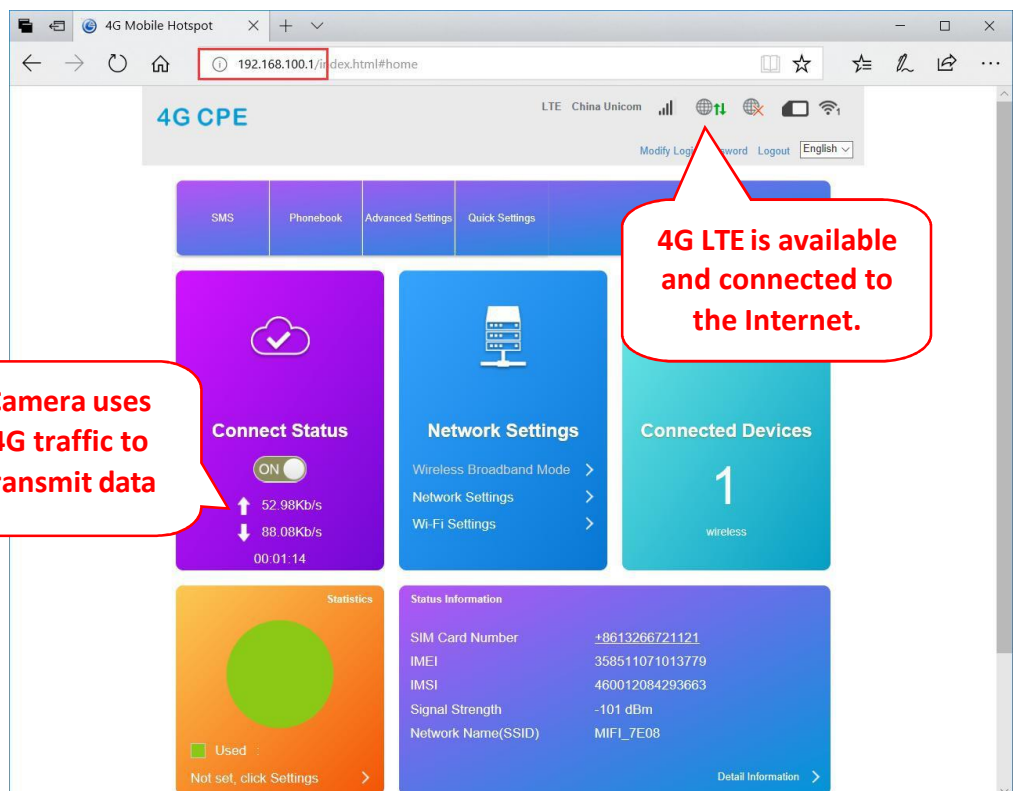


PC

6.2 Access “192.168.100.1” through the browser, the page password is “**admin**”, you can check the SIM card status on this page.



mobile phone



PC

## 6.3 If camera display is offline, please note the following:

① Damaged card or wrong installation direction when prompted "**No SIM Card or SIM Card invalid!**", as shown below 1).



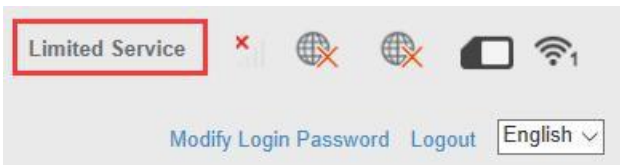
1)



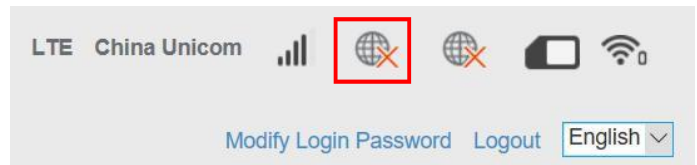
2)

② SIM card arrears or SIM card 4G is not available when displaying **non-4G (LTE)**, as shown above 2).

③ The camera does not support the frequency of the SIM card when prompted "**No Service**" or "**Limited Service**", as shown below 3).



3)



4)

④ Displaying **4G (LTE)** but **Internet is not available**, as shown above 4), the camera does not recognize the correct APN setting, you need to get the correct APN information from the 4G operator and set it up manually.

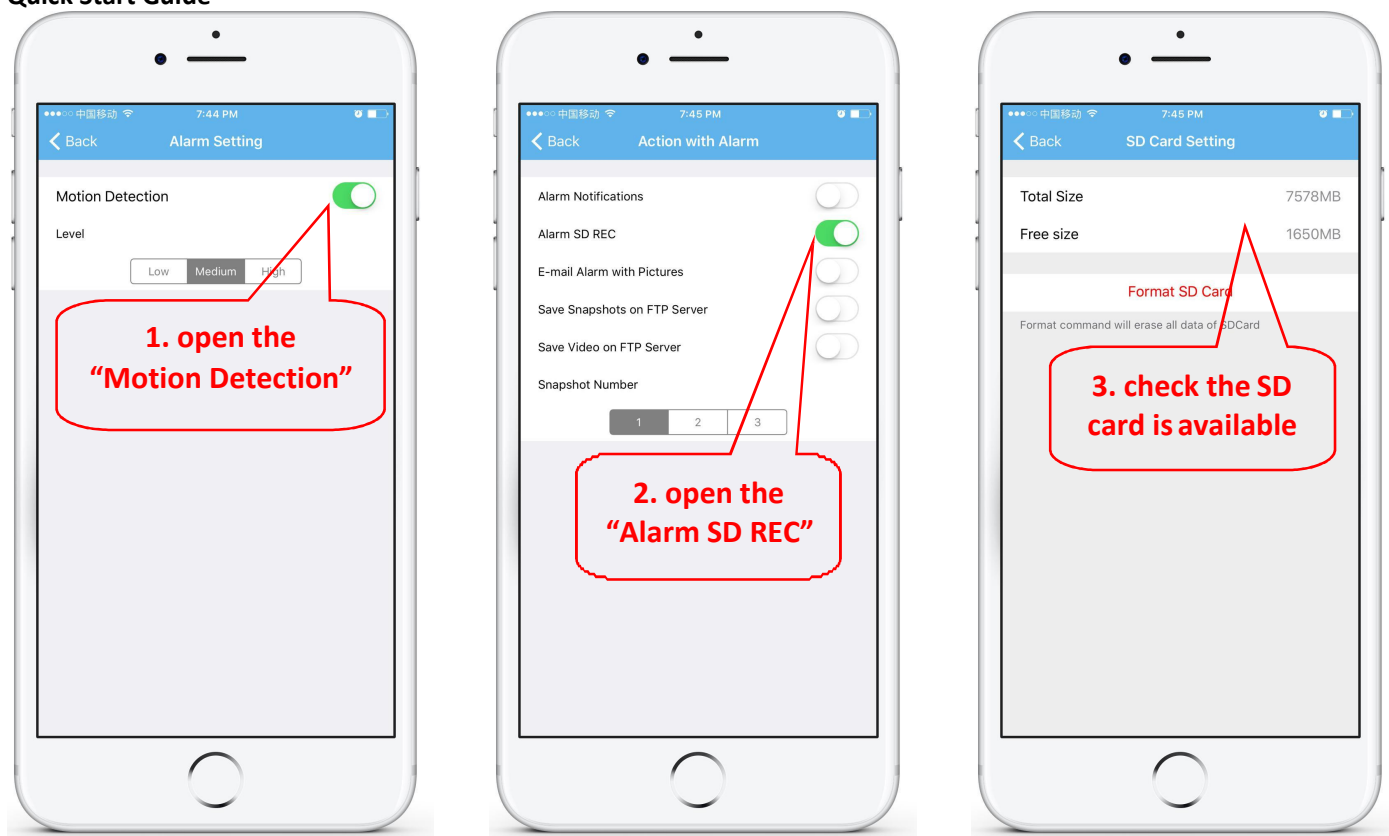
More help documentation are available in the CD information.

**If your problem still cannot be solved, please contact us for help.**

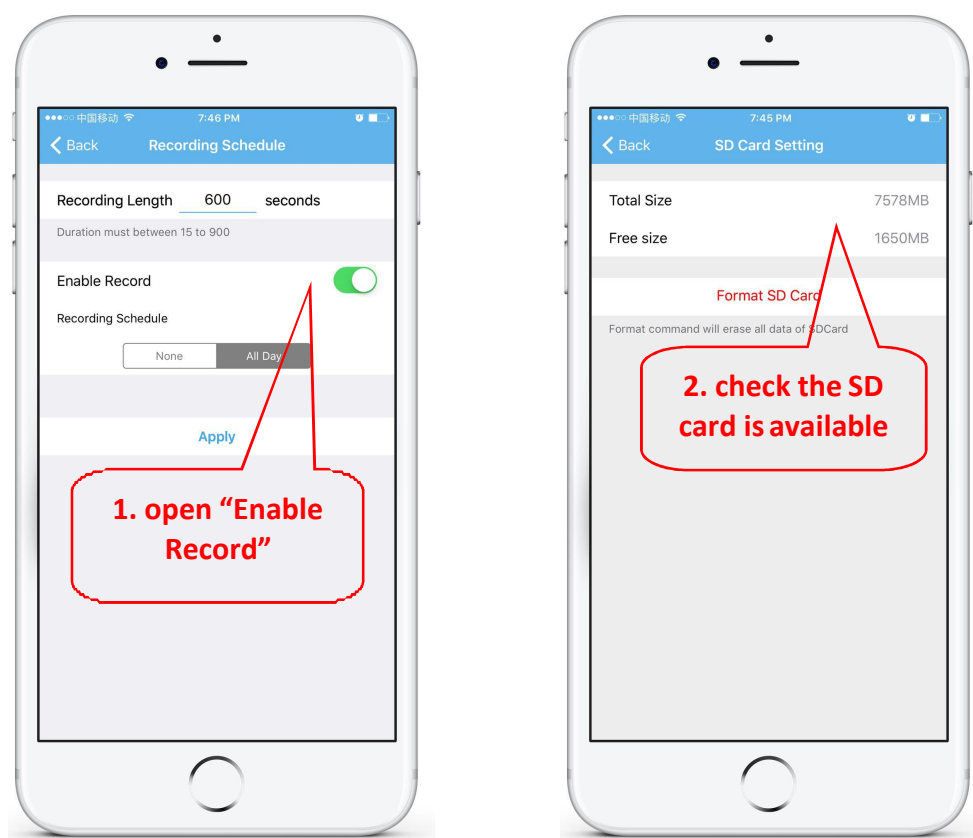
## 7. Set Micro SD card record

### 7.1 Set motion detection alarm recording on the phone.

## Quick Start Guide

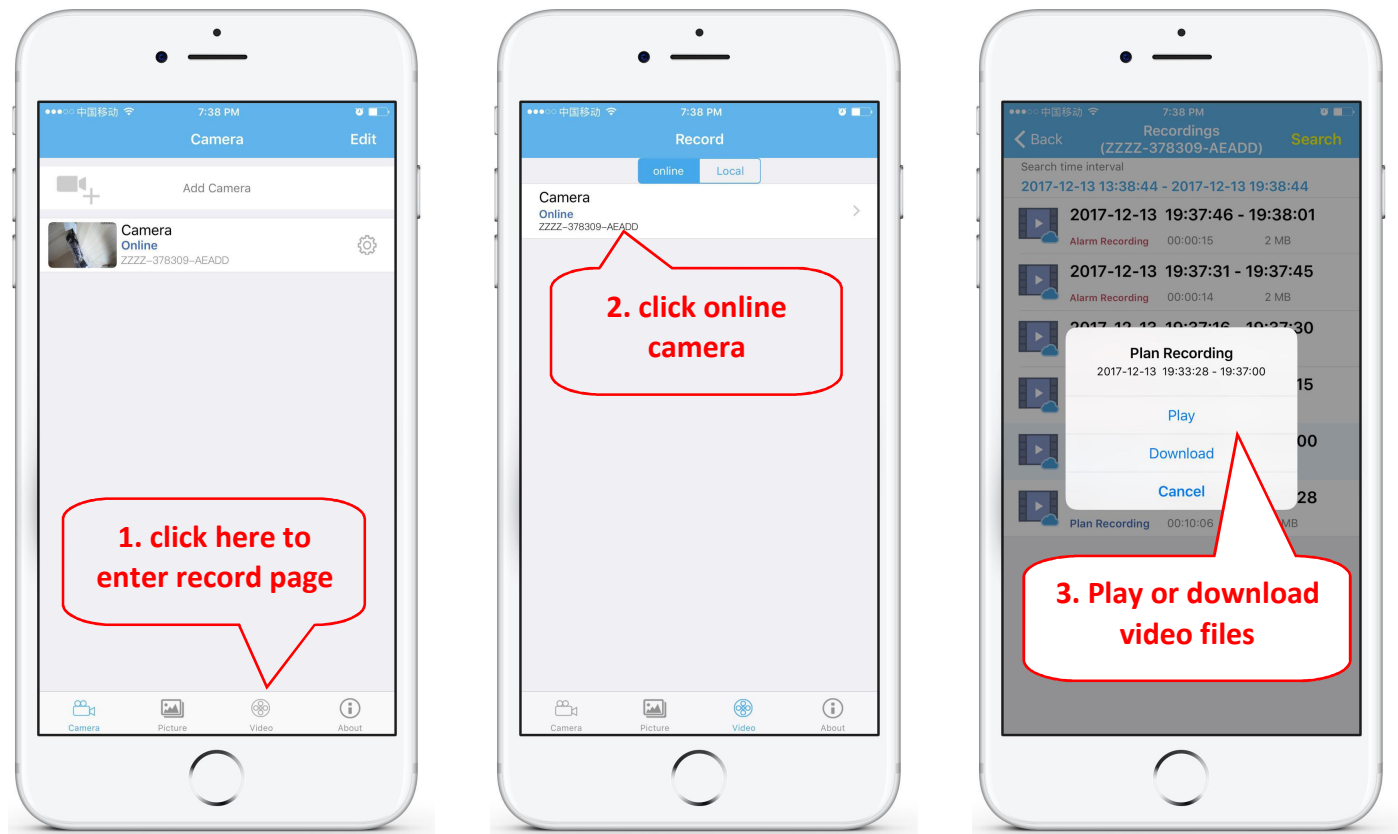


## 7.2 Set schedule recording on phone.



**Motion detection recording is recommended to save storage space.**

## 7.3 Playback record on phone.



These parameters can be set in more detail via IE browser or “HiP2P Client”.

## 8. More info

This manual is to help customers to know and use the camera quickly, For detailed instructions and video tutorials please refer to the content of CD .

This manual may have descriptions and operations that do not match the product, If you have any questions or need technical support Please feel free to contact us or our dealers.